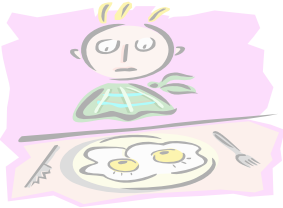


# Class Interview Time



First write down your times in the table below and then interview your partner to see what time they do those things. Then find out about someone else by getting their information from a different person.

What time do you usually...?



	Me	1	2
Wake up at			
Get up at			
Take a shower at			
Brush my teeth at			
Get dressed for work at			
Eat breakfast at			
Leave the house at			
Get to school at			